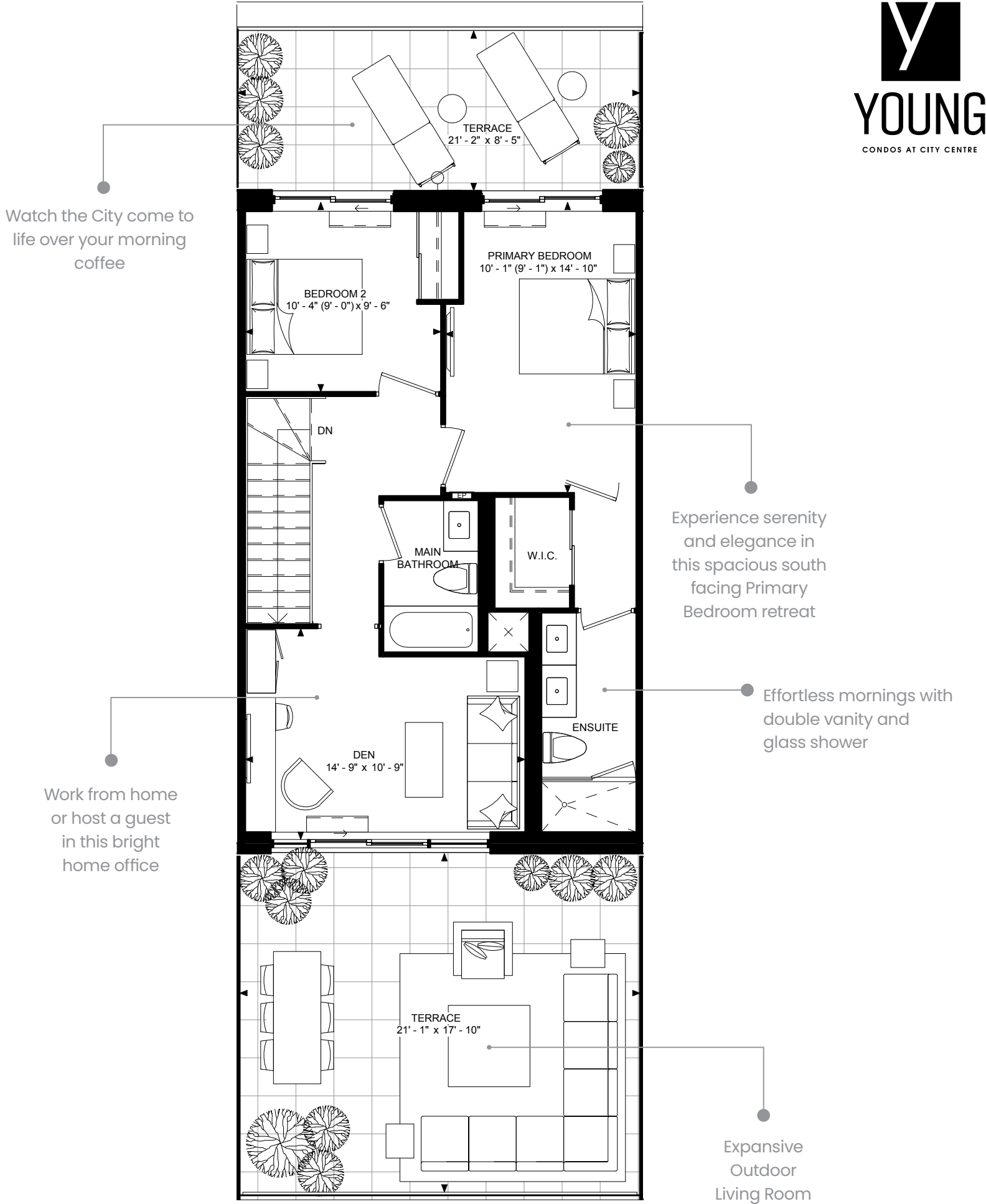
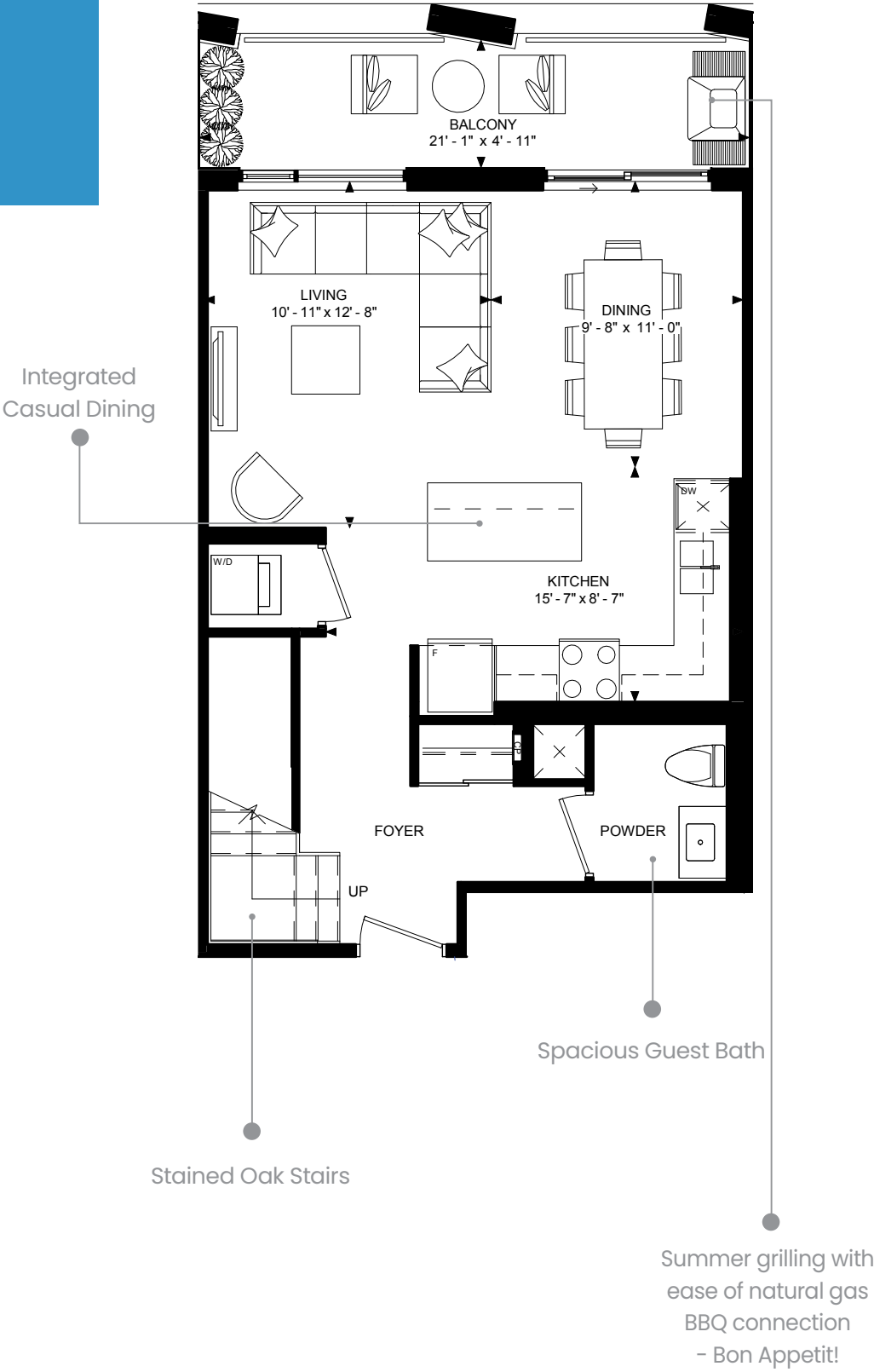
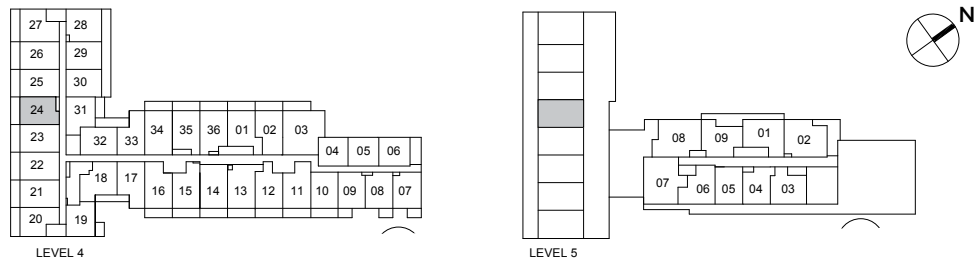


HUDSON
(2D-B)

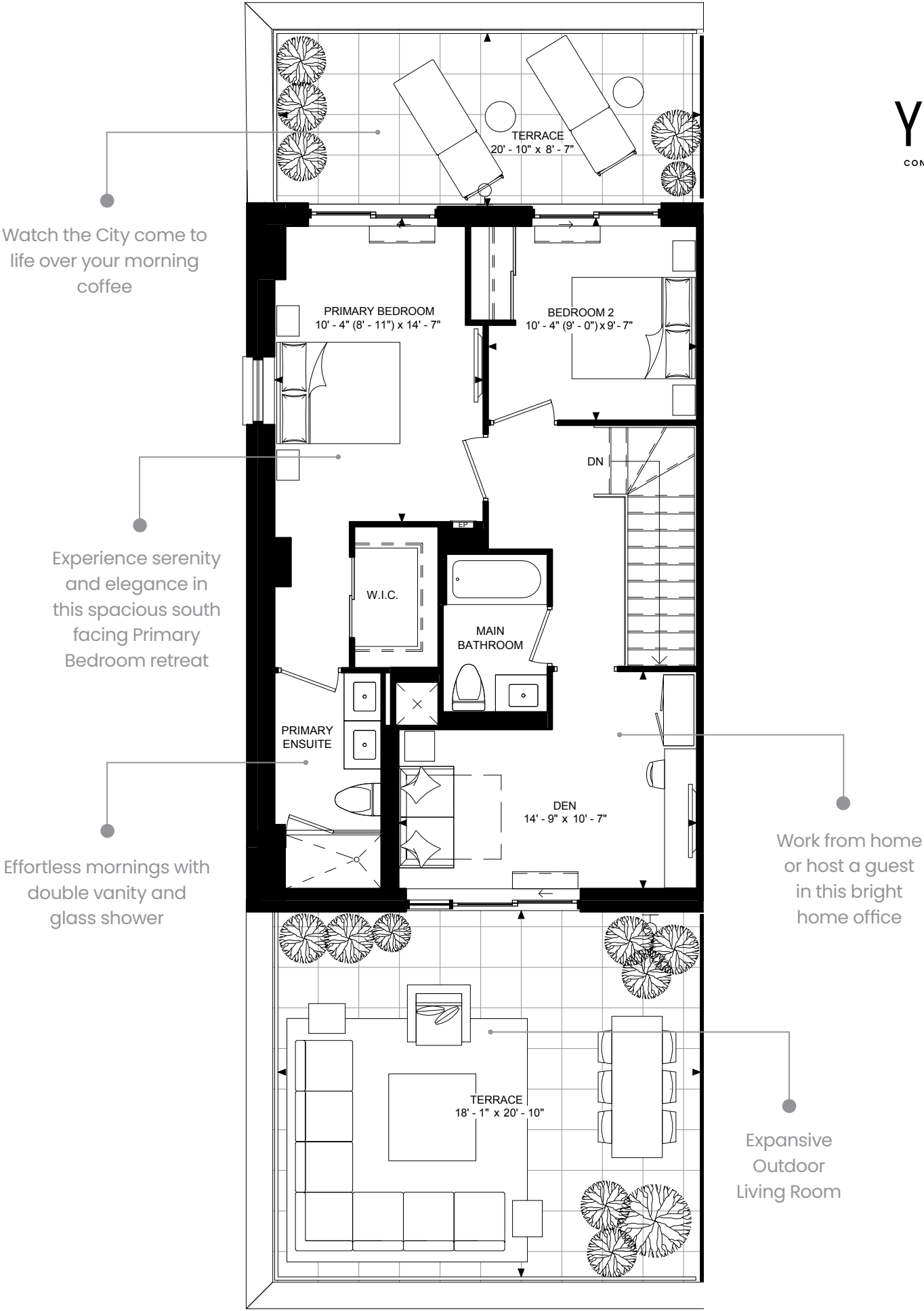
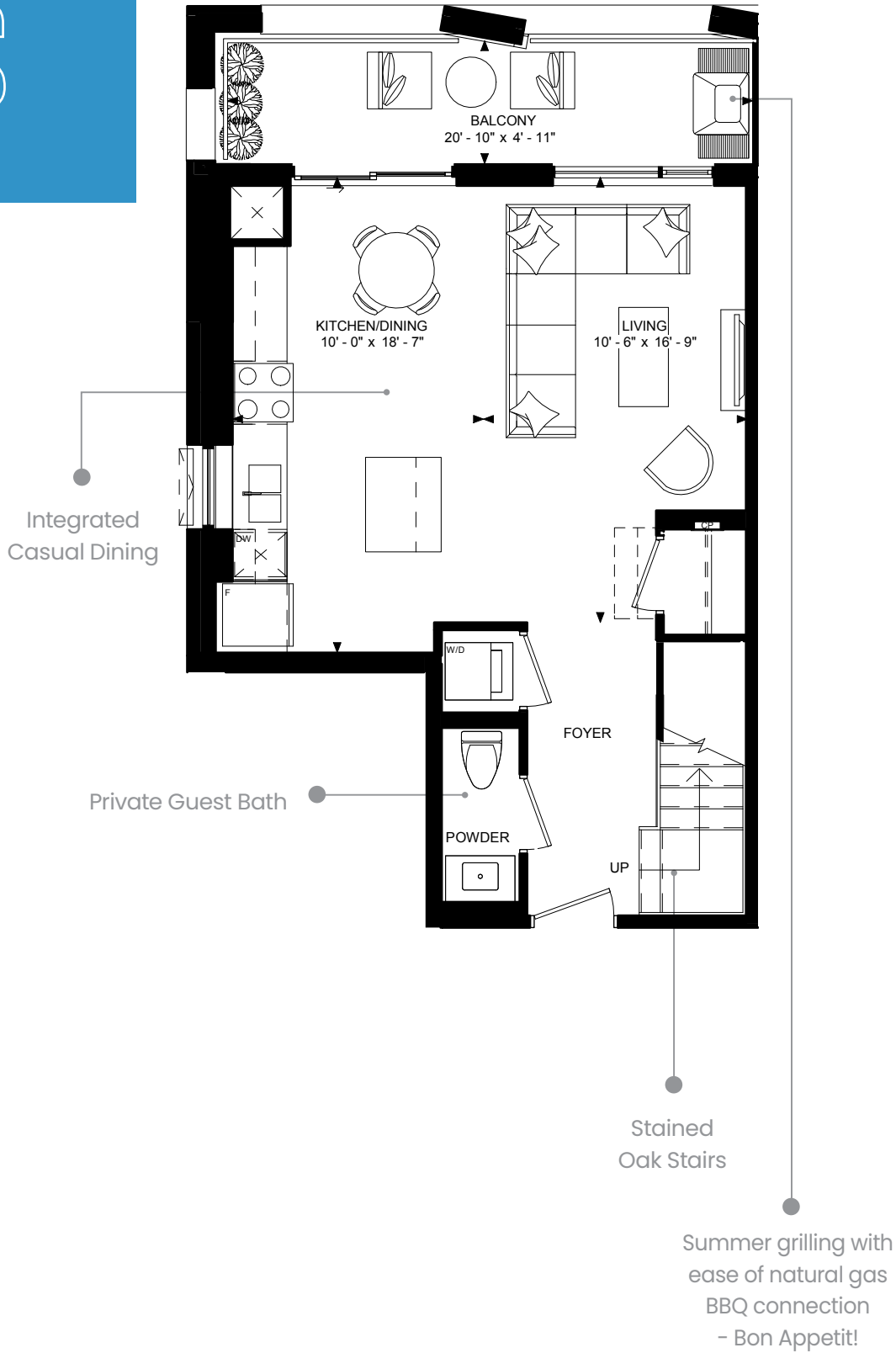
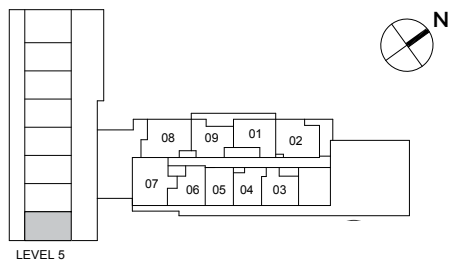
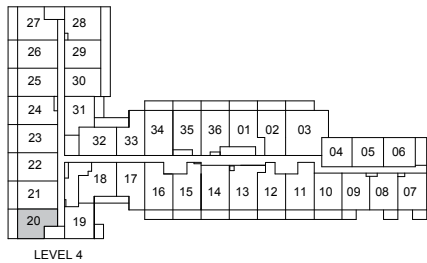
2,040 TOTAL SQ. FT.
2 BEDROOM + DEN
1,360 SQ. FT. OF INDOOR SPACE
108 SQ. FT. OF BALCONY SPACE
572 SQ. FT. OF TERRACE SPACE



AS-BUILT CONDITION TAKES PRECEDENCE OVER FLOOR PLAN LAYOUT. Floorplans and elevations are not to scale and subject to architectural review and revision including without limitation, the house/suite being constructed with a layout that is the reverse of that set out above. All materials, specifications, details, and dimensions, if any, are approximate and subject to change without notice in order to comply with building site conditions and municipal, structural, Vendor and/or architectural requirements. Actual usable floor area may vary from the stated floor area in accordance with the Floor Area Calculations Directive dated February 1, 2021 published by the Housing Construction Regulatory Authority. Location of structural and mechanical elements may vary from what is shown. Bulkheads are not shown on this plan and may be in areas of the house/suite as required to provide venting and mechanical systems. Balconies, terraces, and patios, if any, are exclusive use common elements, shown for display purposes only and the location and size are subject to change without notice. Door and window location, size, swing and type may vary without notice. Homes are sold unfurnished. E. & O. E. 20240429

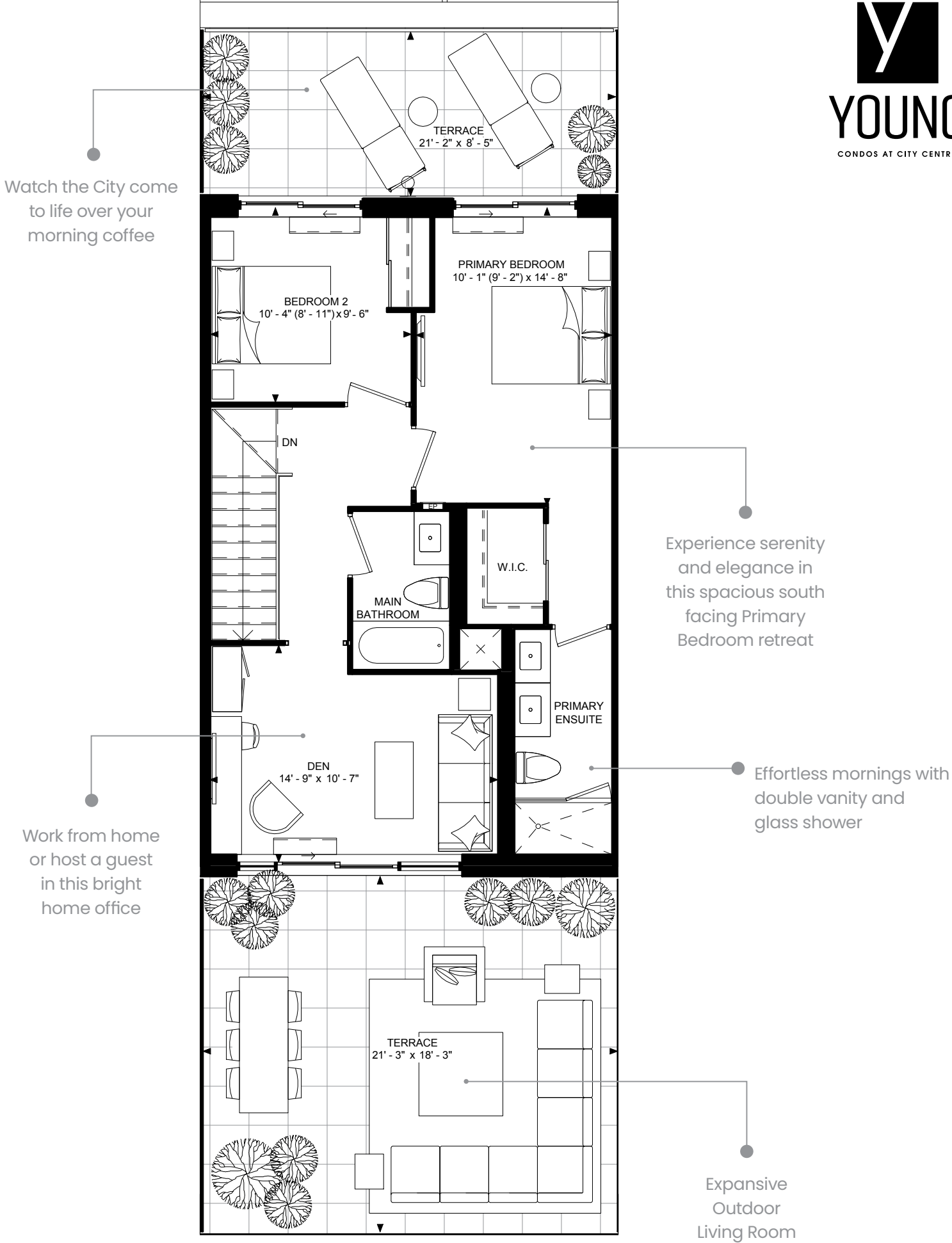
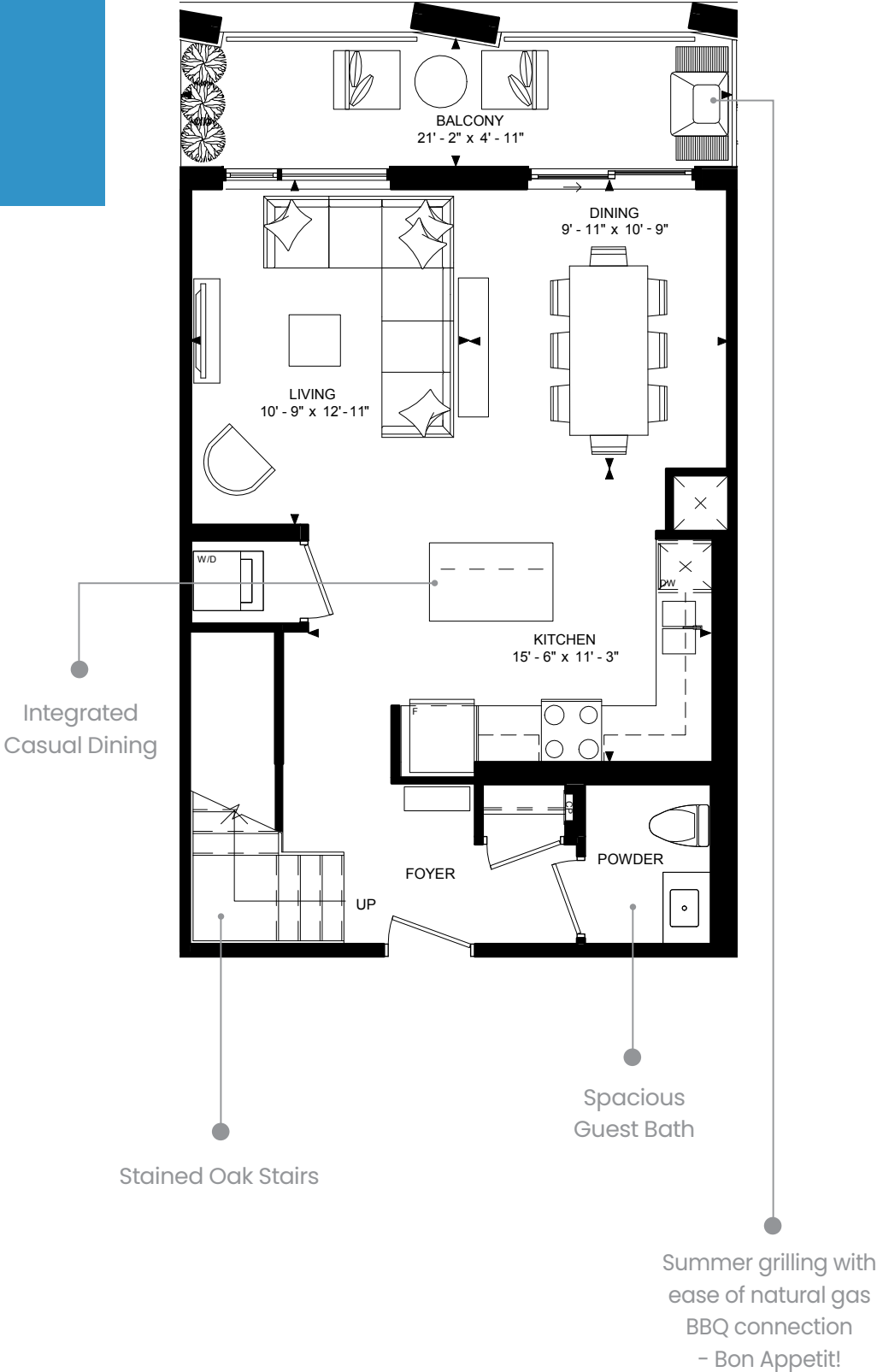
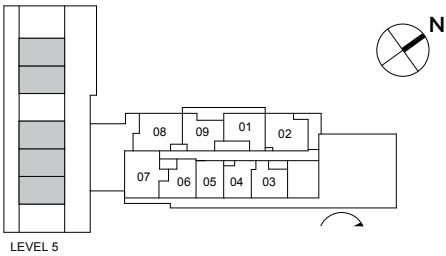
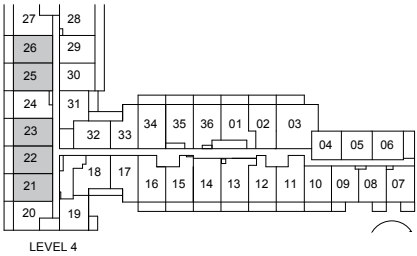
MADISON
(2D-C)

2,052 TOTAL SQ. FT.
2 BEDROOM + DEN
1,373 SQ. FT. OF INDOOR SPACE
109 SQ. FT. OF BALCONY SPACE
570 SQ. FT. OF TERRACE SPACE



CHELSEA
(2D-D)

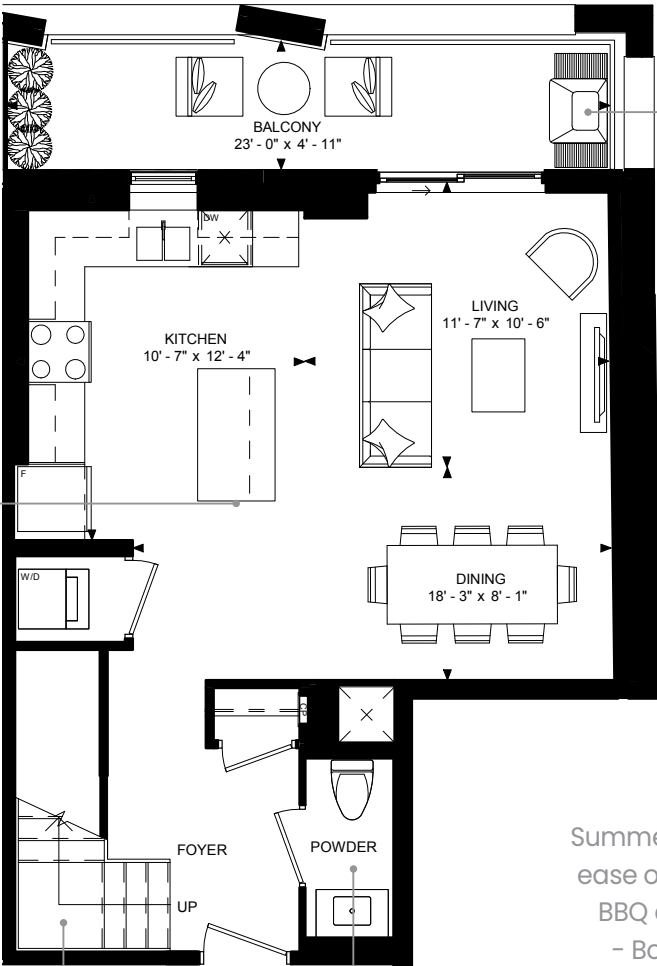
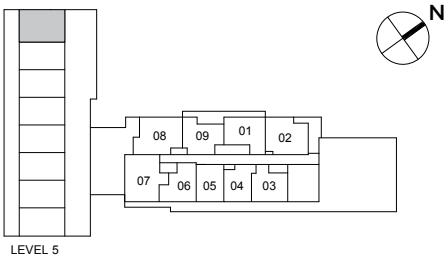
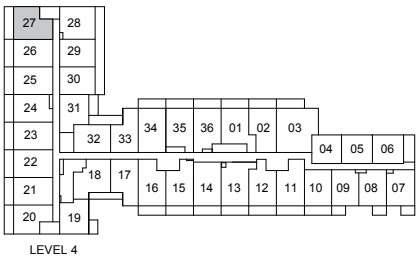
2,073 TOTAL SQ. FT.
2 BEDROOM + DEN
1,387 SQ. FT. OF INDOOR SPACE
108 SQ. FT. OF BALCONY SPACE
578 SQ. FT. OF TERRACE SPACE



AS-BUILT CONDITION TAKES PRECEDENCE OVER FLOOR PLAN LAYOUT. Floorplans and elevations are not to scale and subject to architectural review and revision including without limitation, the house/suite being constructed with a layout that is the reverse of that set out above. All materials, specifications, details, and dimensions, if any, are approximate and subject to change without notice in order to comply with building site conditions and municipal, structural, Vendor and/or architectural requirements. Actual usable floor area may vary from the stated floor area in accordance with the Floor Area Calculations Directive dated February 1, 2021 published by the Housing Construction Regulatory Authority. Location of structural and mechanical elements may vary from what is shown. Bulkheads are not shown on this plan and may be in areas of the house/suite as required to provide venting and mechanical systems. Balconies, terraces, and patios, if any, are exclusive use common elements, shown for display purposes only and the location and size are subject to change without notice. Door and window location, size, swing and type may vary without notice. Homes are sold unfurnished. E. & O. E. 20240429

ALEXANDRIA
(2D-E)

2,389 TOTAL SQ. FT.
2 BEDROOM + DEN
1,526 SQ. FT. OF INDOOR SPACE
112 SQ. FT. OF BALCONY SPACE
751 SQ. FT. OF TERRACE SPACE

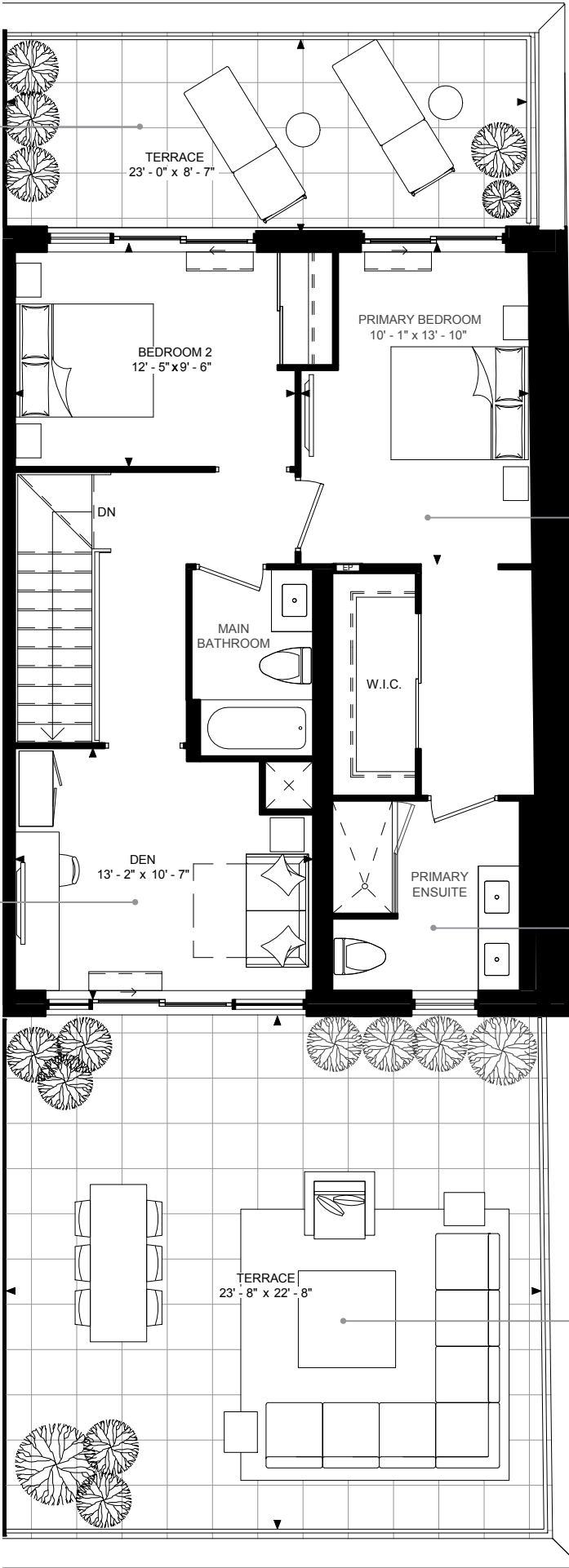


Integrated
Casual Dining

Summer grilling with
ease of natural gas
BBQ connection
- Bon Appetit!

Private Guest Bath

Stained Oak Stairs



Watch the City come
to life over your
morning coffee

Work from home
or host a guest
in this bright
home office

Experience serenity
and elegance in
this spacious south
facing Primary
Bedroom retreat

Effortless mornings with
double vanity and
glass shower

Expansive
Outdoor
Living Room